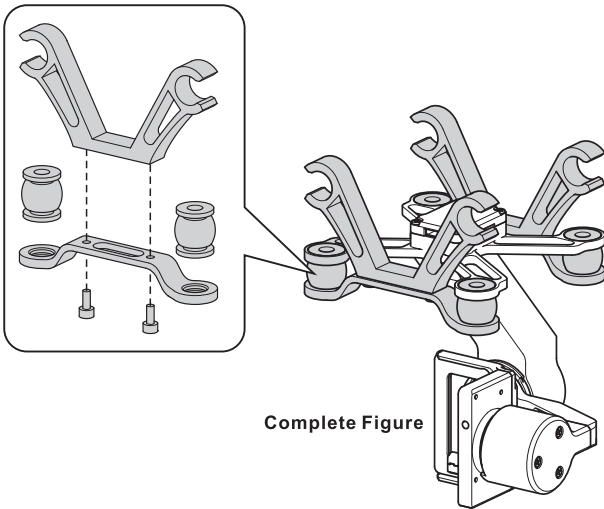


# STELLA

## QUICK INSTALLATION GUIDE

### 1 Install Shock Absorbers and Mounting Brackets



### 0 Notice

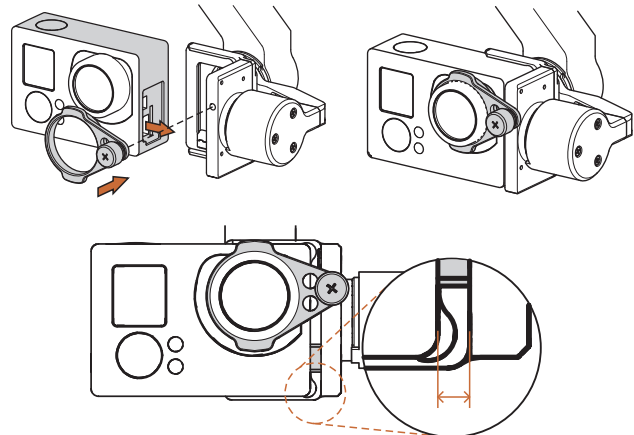
Before installing and using this product, please read **this guide** and **user manual** carefully.

A detailed **user manual** is available at [www.xaircraft.com](http://www.xaircraft.com)

### Safety Precautions

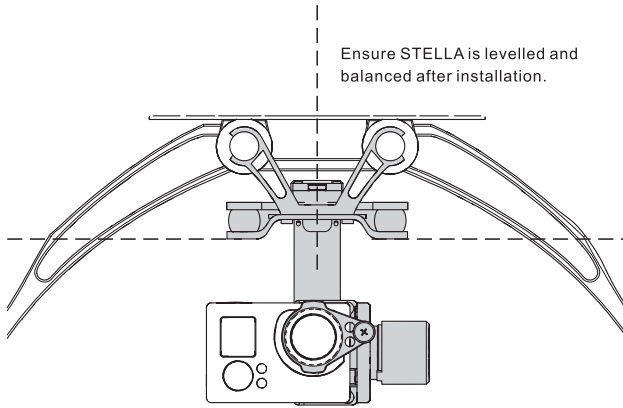
1. STELLA gimbal is only designed for GoPro Hero 3 and 3+ sports cameras.
2. You must position the GoPro camera onto STELLA before powering-on the aircraft at any time. Powering-on an empty gimbal connected to the aircraft may cause damage.
3. Do not install any third party accessories to the camera or gimbal.
4. Ensure you use the original GoPro camera batteries.
5. Do not attempt to adjust or alter the mechanical structure of the gimbal.
6. Please use a separate power source when testing or configuring STELLA, or remove propellers from the aircraft for safety.

### 2 Install GoPro Hero 3 camera

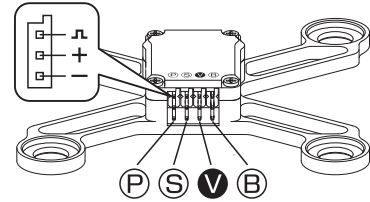


When the camera is properly installed onto STELLA, you will notice a small space. This is normal.

## 3 Install STELLA on Aircraft (X650 Pro)



## 4 Wiring



Normal Receiver	
(P)	Gimbal Pitch
(S)	Mode Switch
(V)	Video Out/OSD
(B)	Power In(3S~6S LiPo)

S.BUS/S.BUS2 Receiver	
(P)	Disconnected
(S)	S.BUS
(V)	Video Out/OSD
(B)	Power In(3S~6S LiPo)
S.BUS/S.BUS2 Channels Setting	
CH8	Gimbal Pitch
CH9	Gimbal Roll
CH10	Mode Switch
CH11	90° Pitch Switch

## 5 Power On System check and Troubleshooting

### Power On and System check

- After you switch on the remote controller and provide power to the aircraft, STELLA will conduct a system self-check for 5 seconds.
- Make sure STELLA remains stationary during the system check.
- If the system check is successful, your camera should be levelled and will stay levelled when you slowly maneuver your aircraft.
- If the system check fails, please see troubleshooting below.

### Troubleshooting

Symptoms	Possible Reasons	Solutions
5 seconds after powering on STELLA, camera is still not levelled or simply not responding.	There may have been some movement when powering-on STELLA, system check has failed.	Keep STELLA stationary when powering-on.
Camera keeps drifting.	1. There may have been some movement when powering-on STELLA. 2. The trim setting on your remote controller is too high or abnormal.	1. Keep STELLA stationary when powering-on. 2. Adjust stick trim on the controller.
Camera is not levelled after System check.	1. STELLA is damaged. 2. STELLA is not correctly configured.	1. Contact your local dealer. 2. Reset the initial angle in the configuration software.